



SP1000 USER GUIDE

Product Components



1 Main System



2 Side Camera



3 Ball Sensor



4 Remote Control



5 AA-sized battery

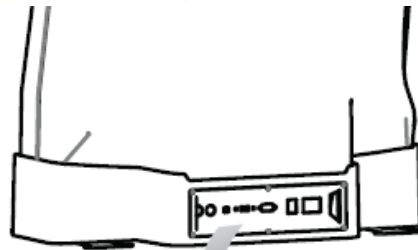


6 Power Cable



7 User Manual

Cable Connection



Side Camera Terminal

2

USB Terminal
(RP-1000 only)

4

Main Switch
Switch to turn on/off
the main system

6



Ball Sensor Terminal

1

LAN Terminal
(RP-1000 only)

3

Serial Terminal

5

Power Cable Terminal
Terminal to connect Power

7

Installation Manual

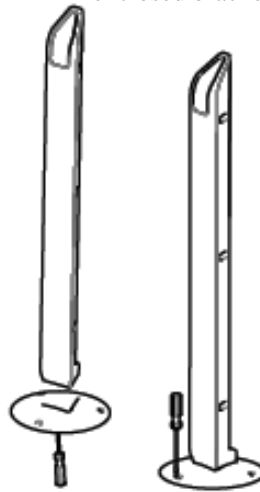
1

Fix the SP-1000(Main Body)
at the front side of swing plate
safely



2

Connect the “side camera body”
and “side camera prop” using
enclosed bracket

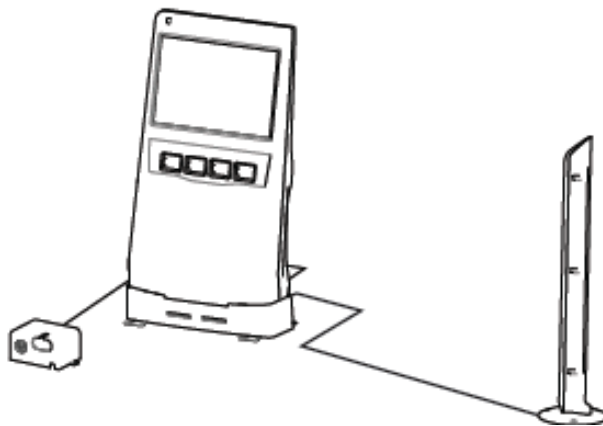


3

Fix the side camera
at the side of swing plate
safely.

4

Connect the SP-1000(Main Body) to the power cable,
side camera and ball sensor respectively.



Contents

1.Parts Name	5
2.How to auto replay swing motion.....	6
3.How to use buttons	8
4.How to control the monitor screen.....	10
5.Settings	13
6.How to use the remote control	19

Parts Name

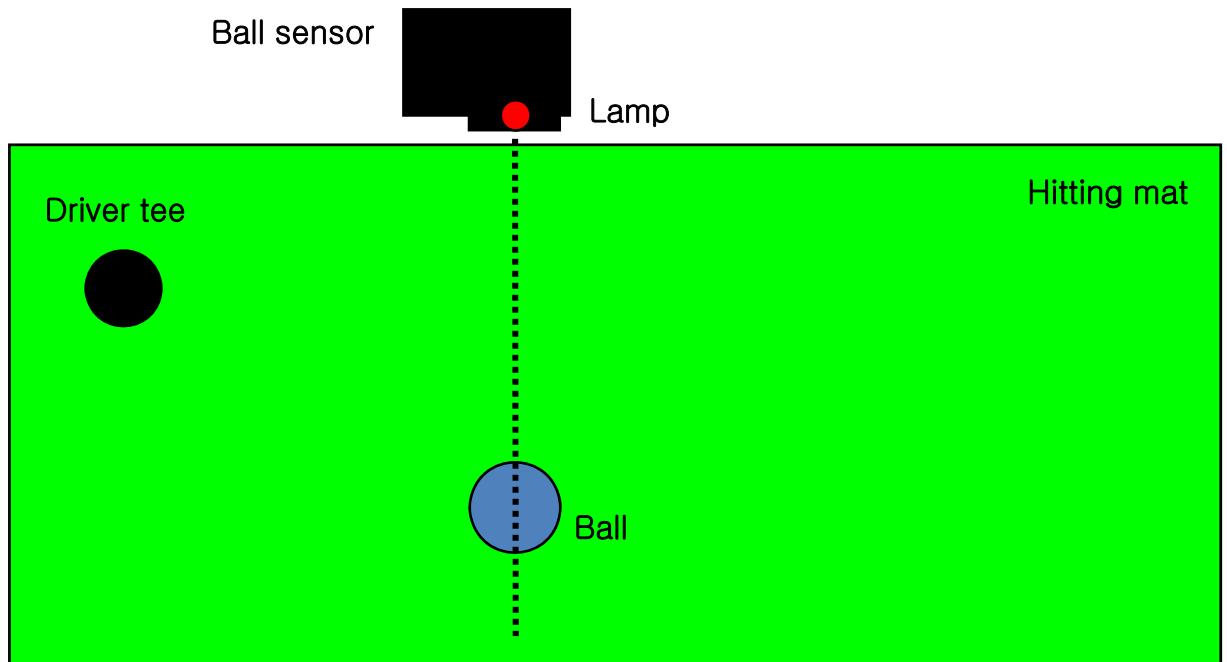


1. 'Select display' button
2. 'Replay speed' button
3. 'Select club' button
4. 'Replay/ESC' button
5. Front view camera
6. USB terminals

7. Ball sensor
8. Remote controller
9. Side view camera

How to auto replay swing motion

* How to replay automatically right after hitting the ball



For hitting a ball on the mat, not on the tee, with clubs such as Wood, Iron and wedge, the ball should be on the line along with the ball sensor so that the lamp of it can be turned on, otherwise it cannot be replayed automatically.

For hitting with Driver, just put the ball on the tee regardless of the lamp.

- The replay may have difficulty if the hitting sound is too low.
- The replay may have difficulty if obstacles such as shoes are on the line along with the lamp of the ball sensor.
- The ball may not be sensed if it is in a hole dug by long-term use.
Please replace the mat or adjust the angle of the ball sensor.

How to auto replay swing motion

* How to operate while replay



- ①, ② : Backward/Forward for one's shot slide by slide
- ③ : Pause/Play the replay screen
- ④, ⑤ : Backward/Forward for Man/Lady pro's slide by slide

* Buttons can be controlled by the remote control as well.



How to use buttons



①. “Select Display” button

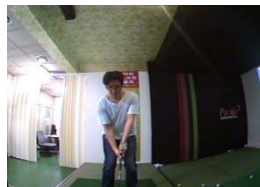
Various display formats come up in turn by pressing the button



Man pro



Lady pro



Front view



Side view



Front-Side view

How to use buttons

②. “Replay Speed” button

Replay speed can be switched in turn by pressing the button.

Ex)Normal / Slow / Slowest speed

③. “Select Club” button

The club of Man/Lady pro can be switch in turn by pressing the button.

Ex)Driver / Wood / Iron / Approach

④. “Replay/ESC” button

Press the “Replay/ESC” button for reviewing the previous shot.

Press the button again during replay to escape.

* Buttons can be controlled by the remote control as well.



How to control monitor screen

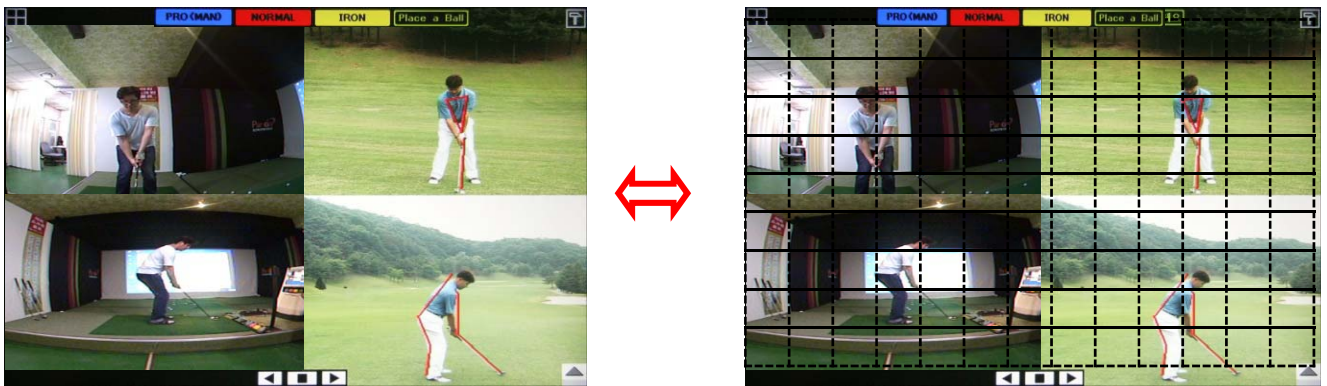


- ①. Grid can be on and off by touching the button (A remote control is available as well<refer to P.19>).
- ②. Display the current state
- ③. Backward/Forward and Play/Pause for Man/Lady pro's.
- ④. Line Drawing (with touch screen only)
- ⑤. Settings (A remote control is available as well<refer to P.19>)

How to control monitor screen

①. Grid On/Off

The grid appears on the screen to check one's posture during shot.



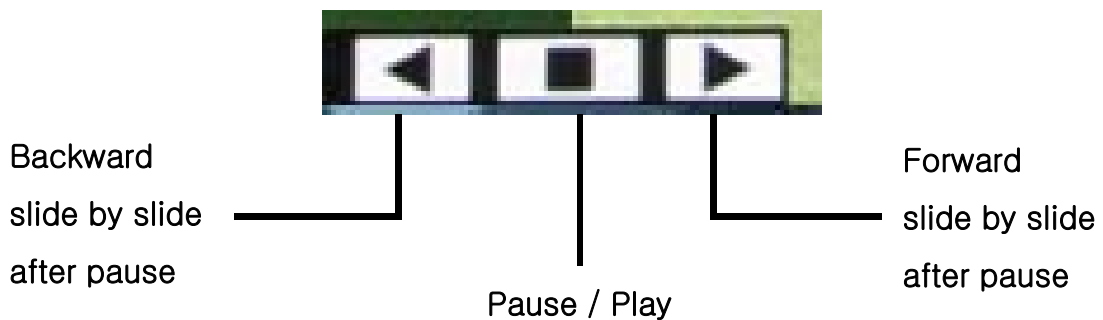
②. Display the current state

It displays its current screen set.

③. Backward/Forward and Play/Pause for Man/Lady pro's

To view pro's shot for reference.

(A remote control is available as well<refer to P.19>)



How to control monitor screen

④. Line Drawing

Available only with touch screen device

PRO (MAN) NORMAL IRON Place a Ball

Select a color

Draw lines

Erase lines

Erase all

Hide Menu

Display Menu

Settings

⑤. Touch the button in red circle.

For SP-1000, Press the “Set Up/Menu” button on the remote control. Then, adjust it. <refer to P.19>



Settings



* Adjusting Brightness and Contrast

Adjust Brightness and Contrast of Front view and Side view cameras.
(Setting as Default value is highly recommended)

* How to change values for Hit sound

– Hit the ball and get the sound figure first. Then, follow as follows.

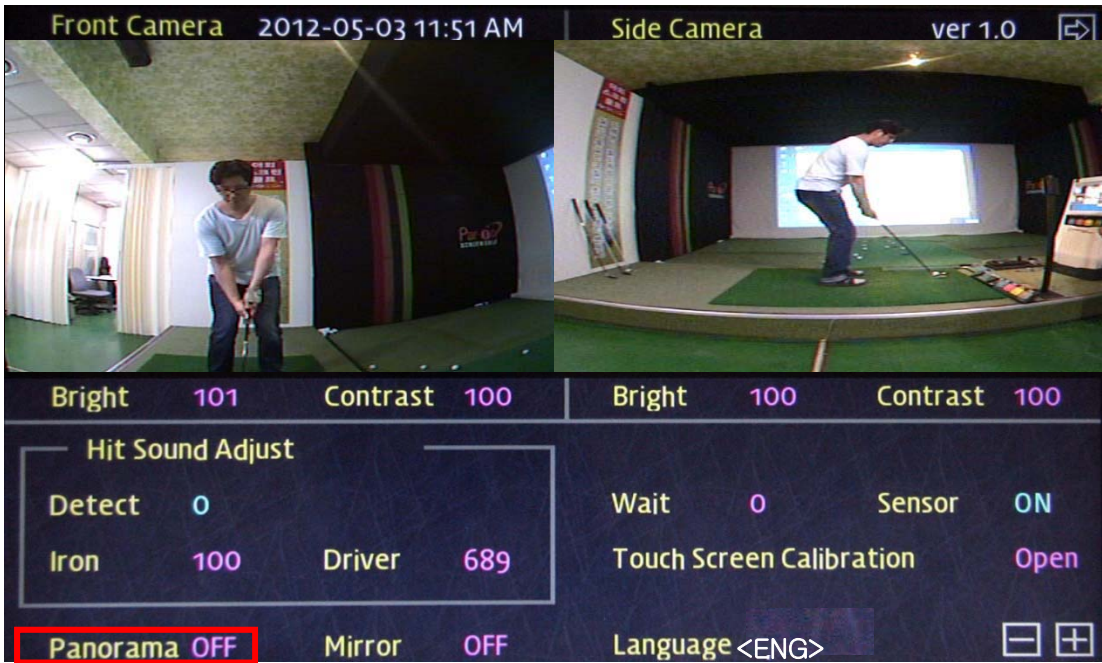
A. For touch screen device (SP-1000 T),

Touch the value to change, and adjust it using +/- button right below.

B. For non-touch screen device (SP-1000)

Move to the value to change by pressing arrow buttons on the remote control, and press Pause button to turn the value white. Then adjust it using arrow buttons and press Pause button again to finish.

Settings

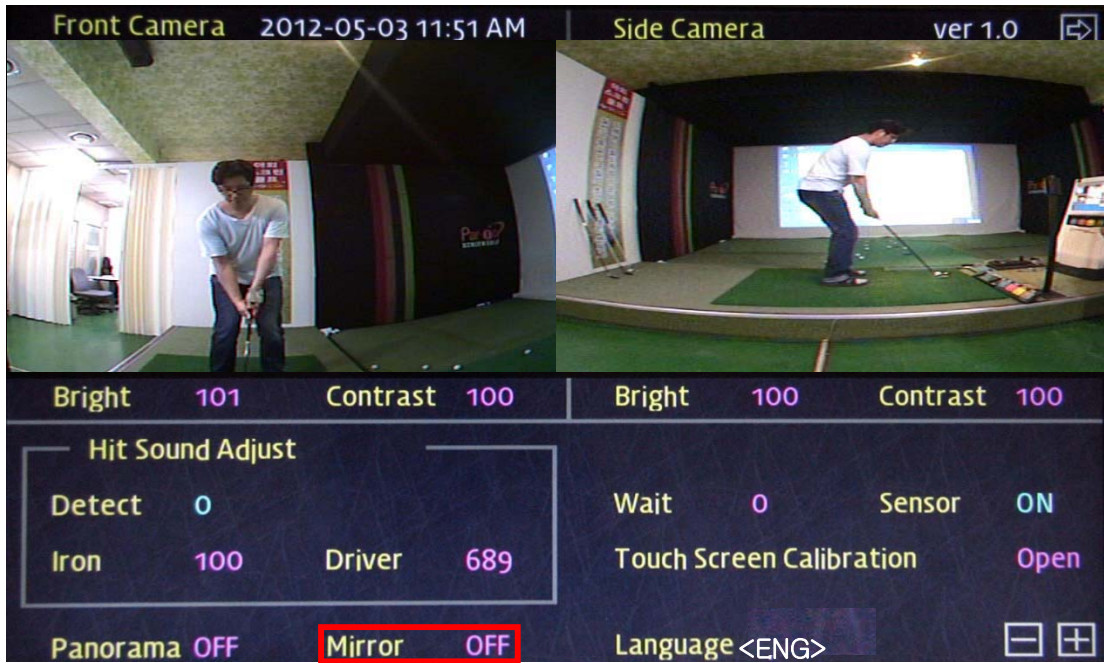


* Panorama

A panorama function can be displayed after auto replay (On/Off)



Settings



* Mirror Image

Displays can be reversed by touching the button – On/Off



Settings



* Wait

Set the waiting time taken until the playback is shown after swing shot.

* Sensor

Display the current state of photo sensor(Ball sensor) – On/Off

* Touch Screen Calibration

It is highly recommended to use only when the touch screen is displayed differently from where you exactly touch.

Touch <Open> to set new calibration(coordinate).

* Language

Change the language. (Korean, English, Japanese, Chinese)

Settings

RETRY

CANCEL

SAVE

CLEAR



Touch crosshair to calibrate

Touch Screen Calibration

- * Press the right center of the white “+” displayed.
When touch the “+”, its position is changed twice for testing.
Please touch exact center of “+”.
Touch “SAVE” **after completion.**

RETRY : to try it again

CANCEL : to cancel it

SAVE : to save it

CLEAR : After setting new calibration(coordinate), you can draw free line for testing. Delete that free line after test by touching “CLEAR”

How to use the remote control

- Backward/Forward for Man/Lady pro's Postures slide by slide after pause.
- Usable for changing values and moving between items under the setting menu.





Tel. 82-2-1666-0753 Fax. 82-2-868-5619

Homepage. www.parongolf.com